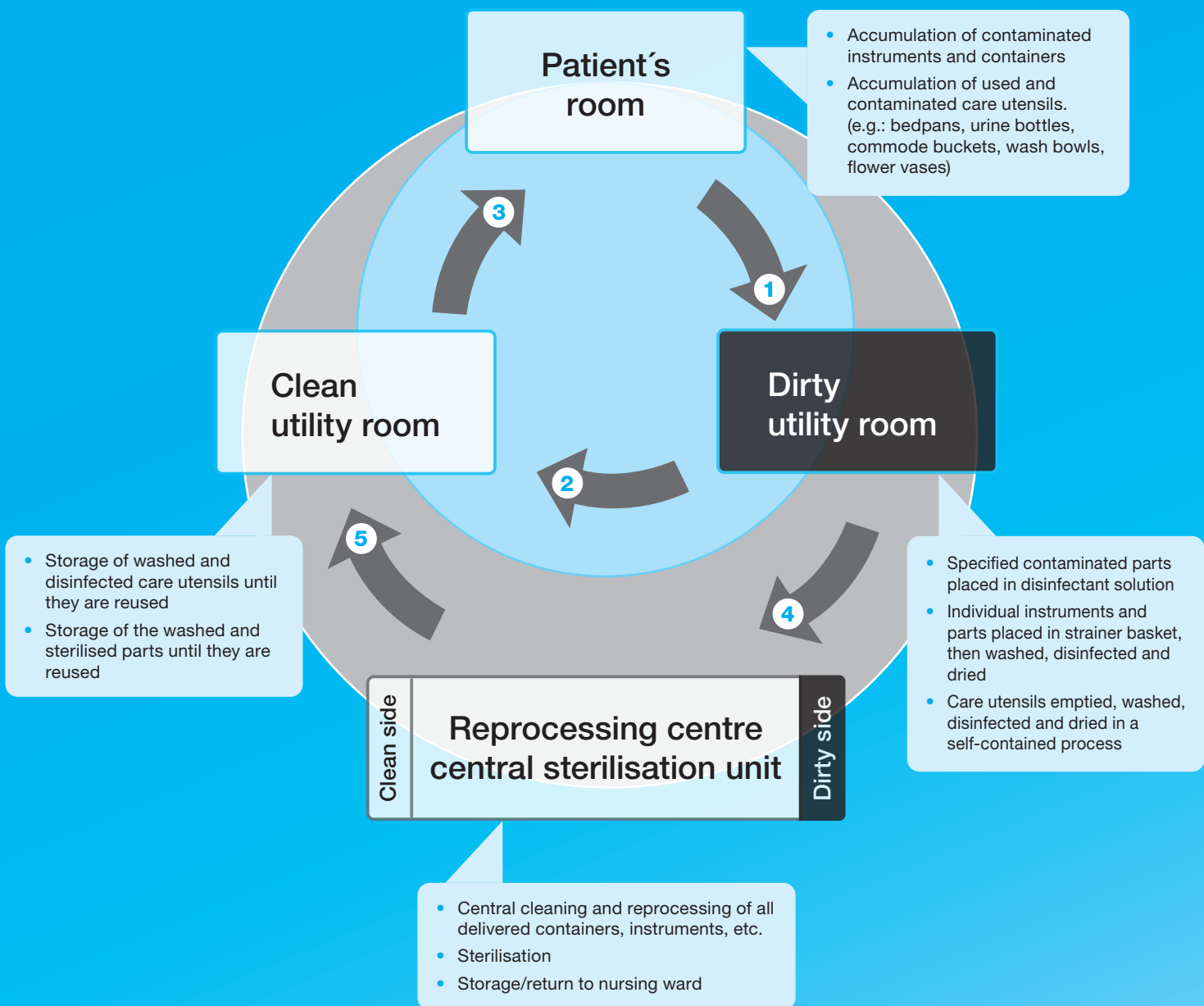


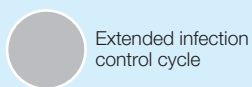
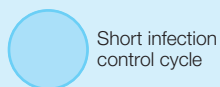


Infection control cycle

Safe processes



Legend:



- 1** Contaminated parts sent to the dirty utility room
- 2** Reprocessed and disinfected parts sent to temporary storage
- 3** Disinfected/sterilised parts sent to patient room/reuse

- 4** Washed and disinfected parts sent to central sterilisation unit/reprocessing centre
- 5** Cleaned and disinfected/sterilised parts sent to nursing ward/temporary storage



The clean solution